

*We are ready to recommend implementation.*

Is it necessary, as a first step in implementation, to educate the community about recommended practices and discuss obstacles to implementation?

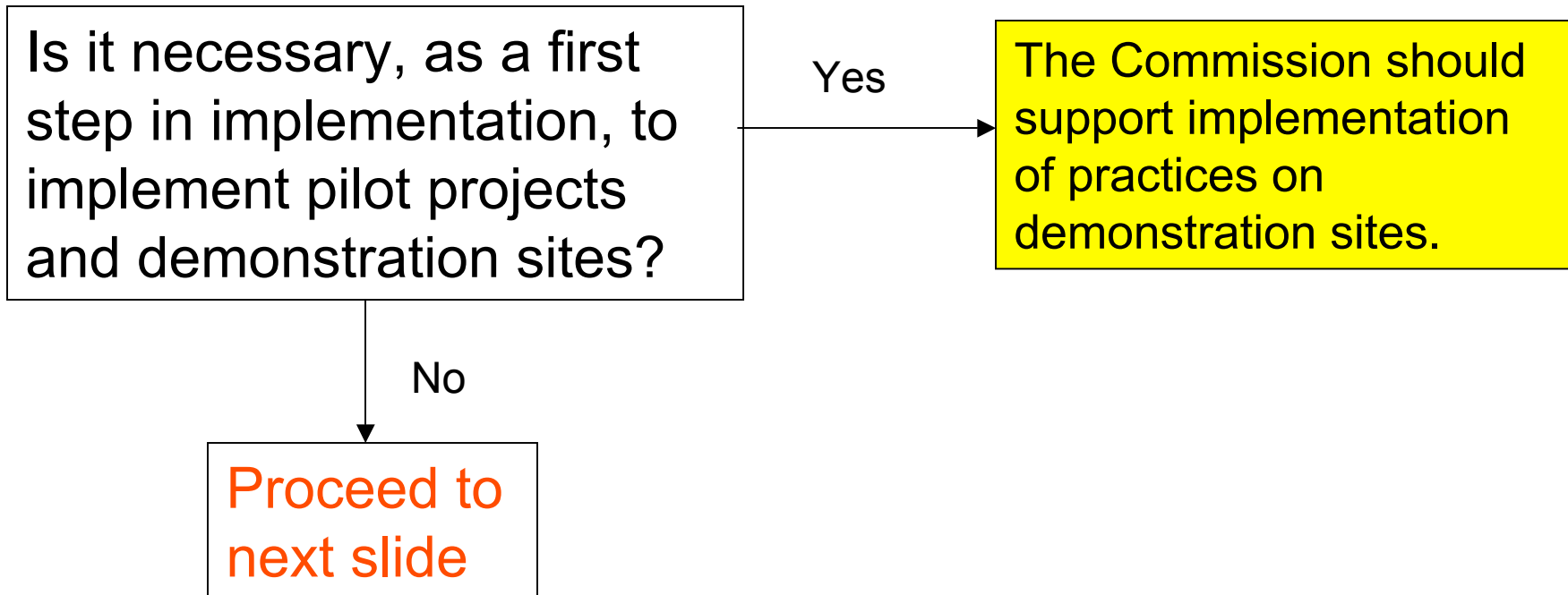
Yes

The Commission should host a workshop for developers, planners, engineers, etc. to provide guidance and discuss roadblocks to implementation.

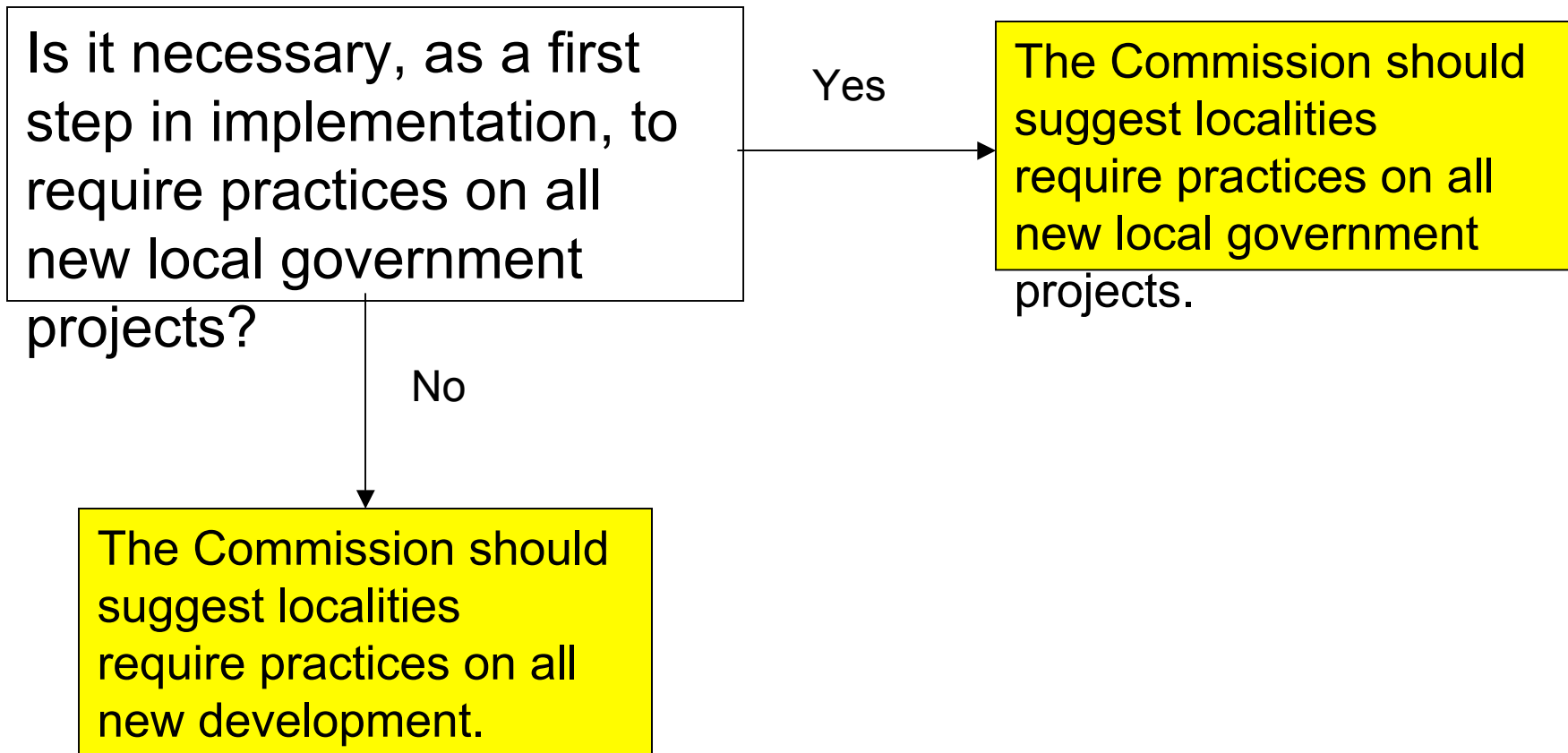
No

Proceed to next slide

*We are ready to recommend implementation.*



*We are ready to recommend implementation.*



*We need to know more about effectiveness of practices.*

Do we need to know more about effectiveness of development-related practices (e.g., rainwater harvesting)?

Yes

Proceed to next slide

No

*We need to know more about open-land practices (e.g., riparian buffers).*

Proceed to Slide 14

*We need to know more about effectiveness of development-related practices.*

Does knowing more require further literature review?

Yes

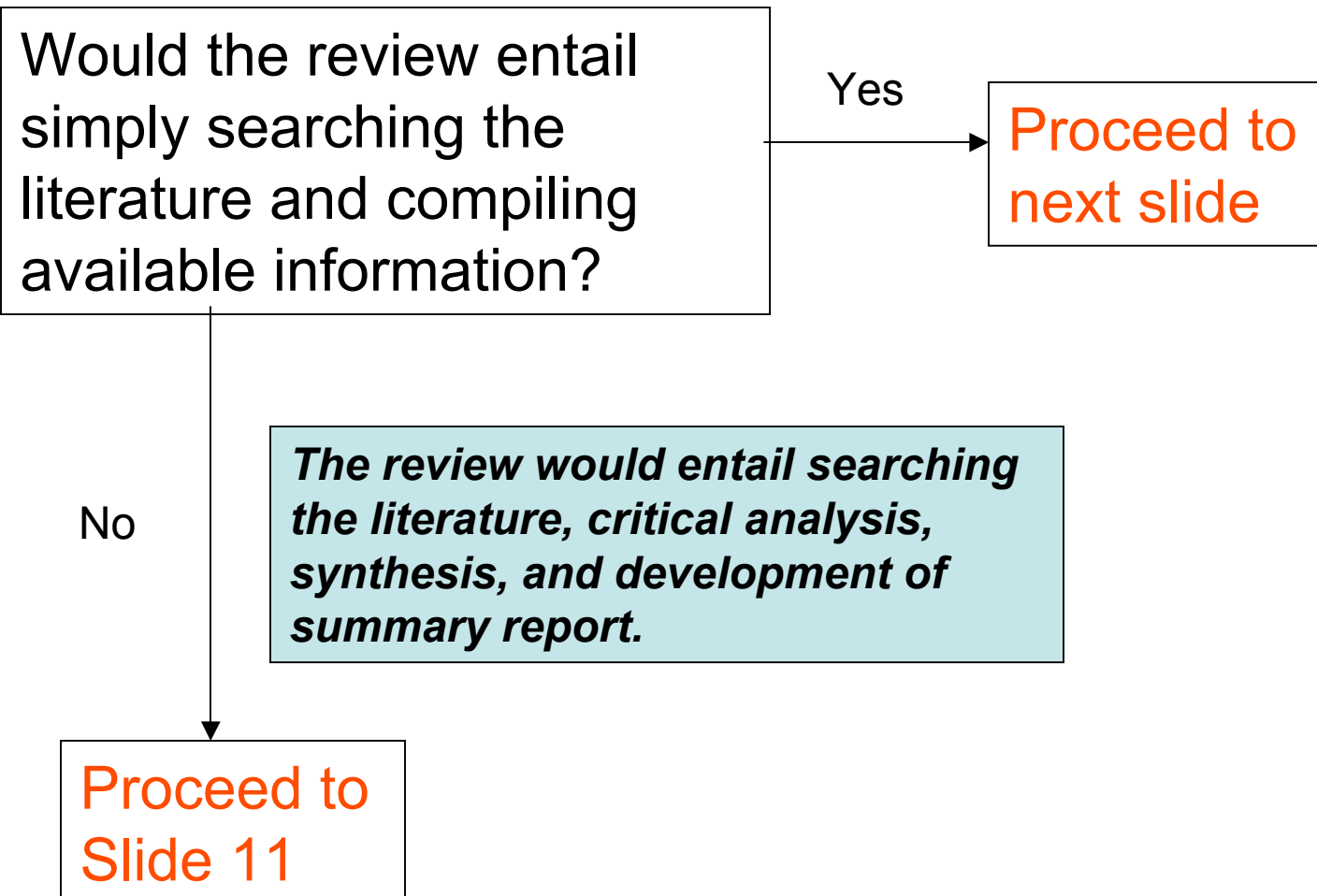
Proceed to next slide

No

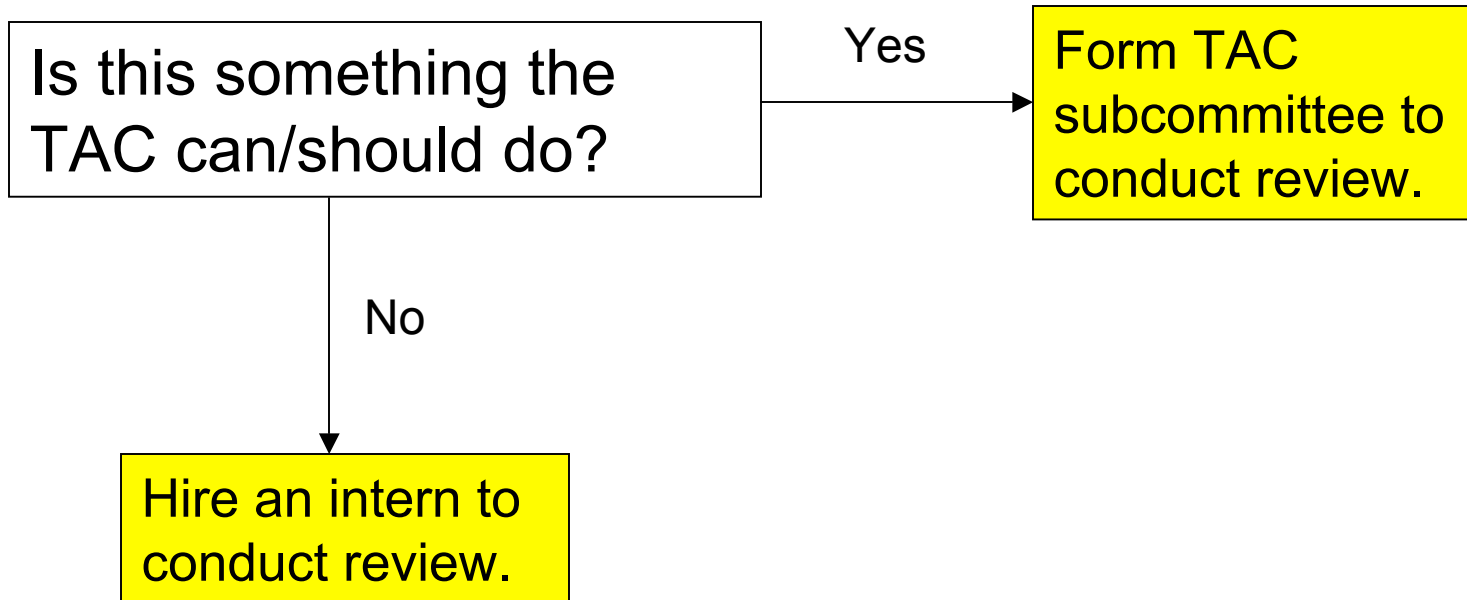
*We have enough information from the literature, but need to test practices in the Rivanna watershed.*

Proceed to Slide 12

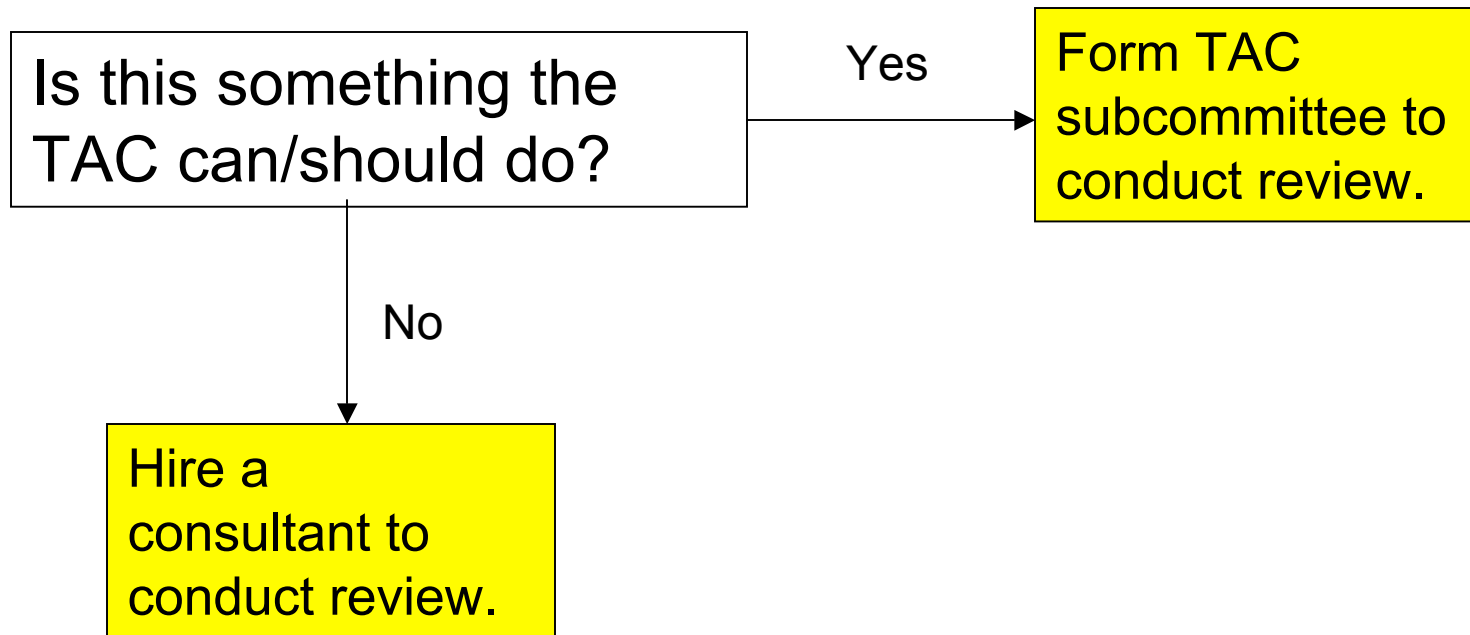
*We need to know more about effectiveness of development-related practices.*



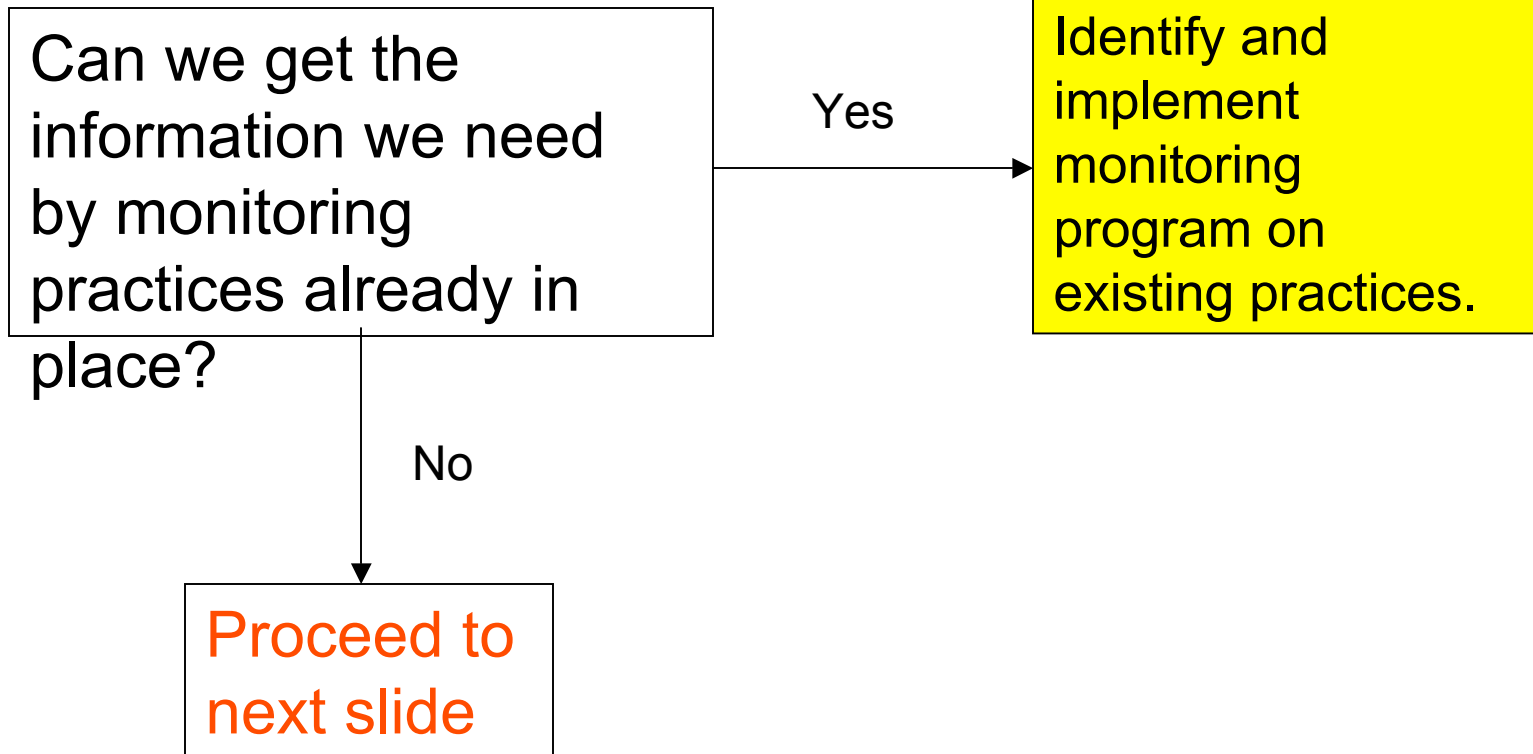
*We need to know more about effectiveness of development-related practices.*



*We need to know more about effectiveness of development-related practices.*



*We need to know more about effectiveness of development-related practices.*



*We need to know more about effectiveness of development-related practices.*

Can we get the information we need by monitoring practices that will be installed soon (e.g., City bus center)?

Yes

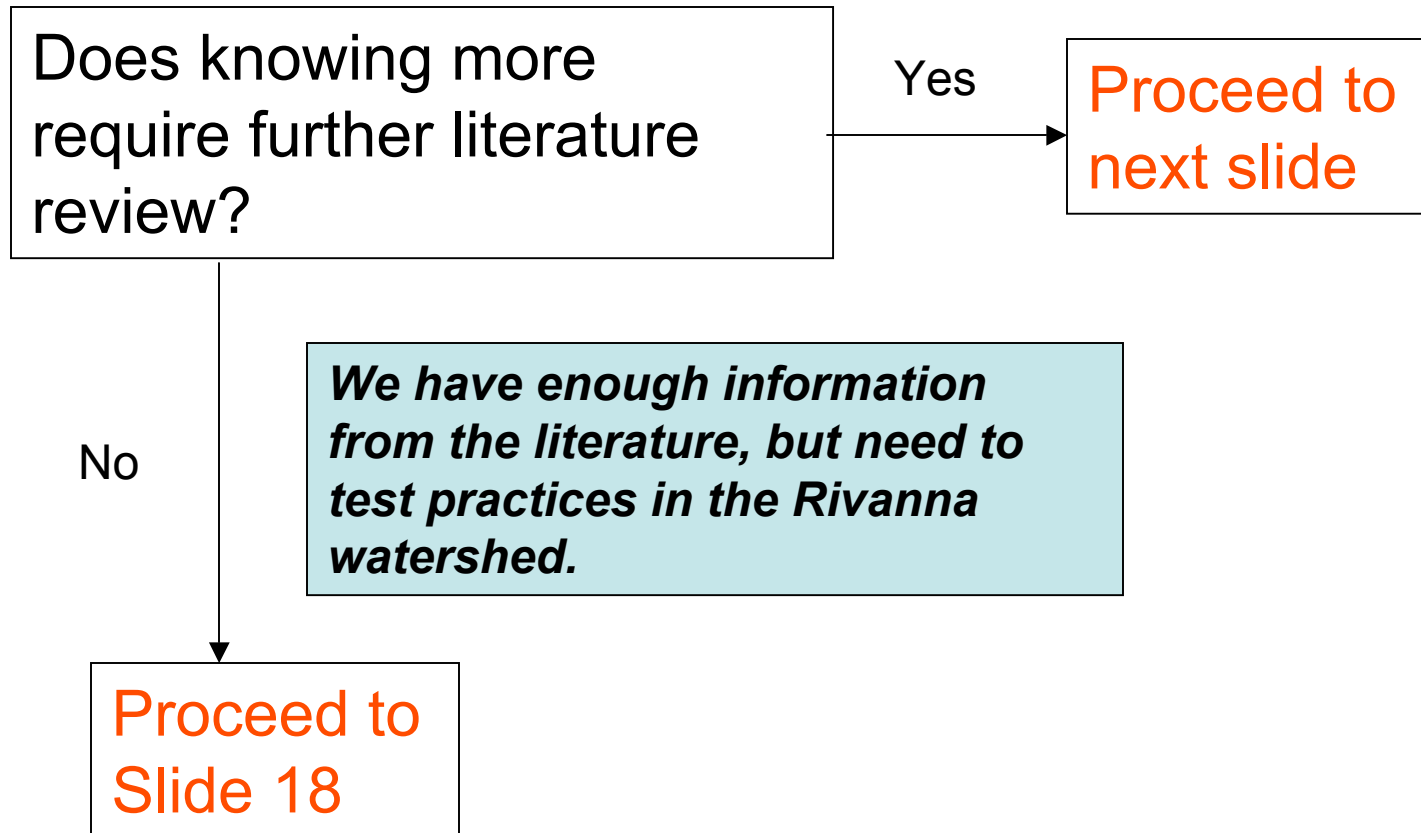
Identify and implement monitoring program on practices scheduled to be installed soon.

No

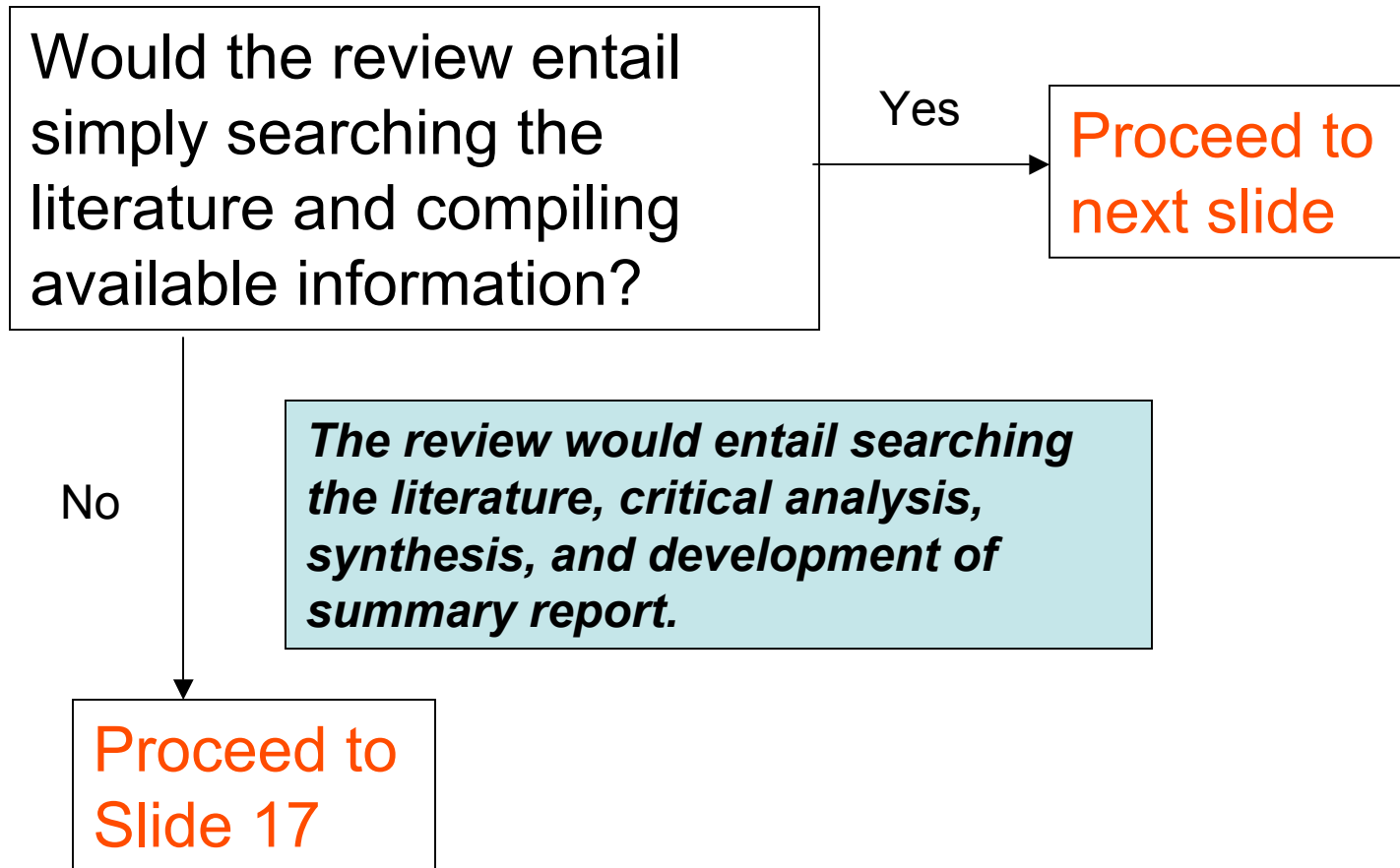
*We need to work with a developer to install and monitor practices on a new development.*

Identify and begin discussions with developer to implement practices and monitoring program (e.g., Biscuit Run).

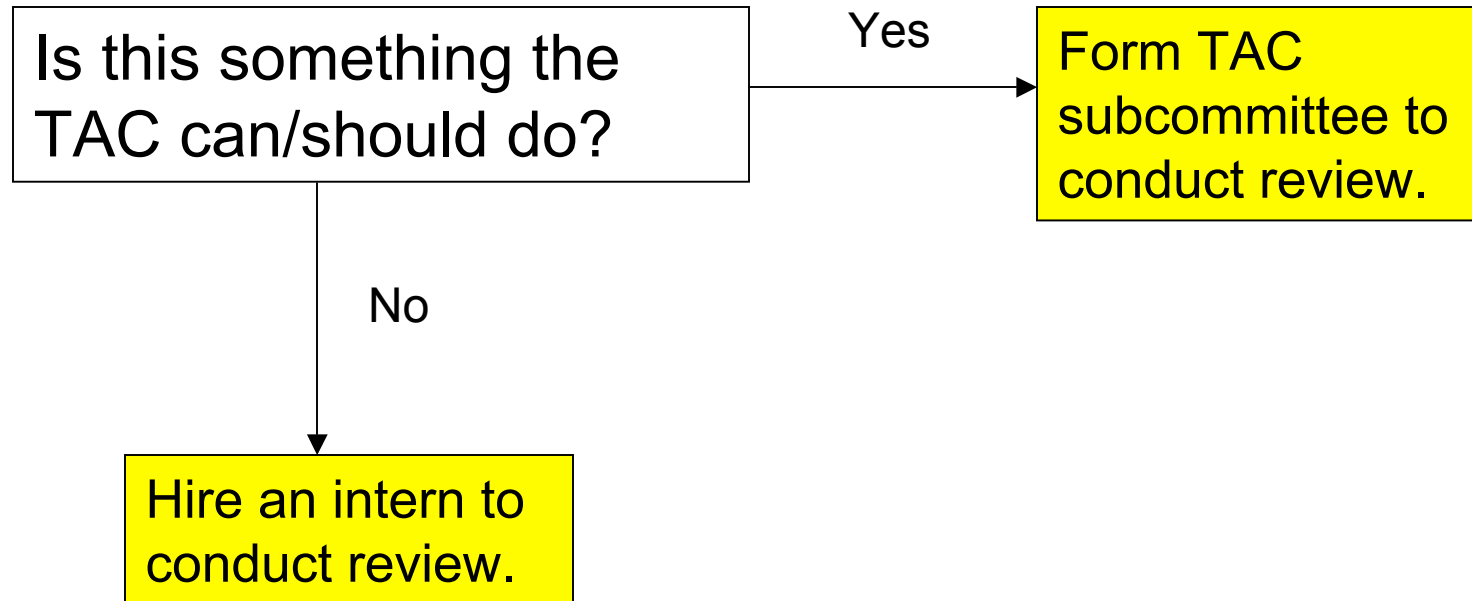
*We need to know more about effectiveness of open-land practices.*



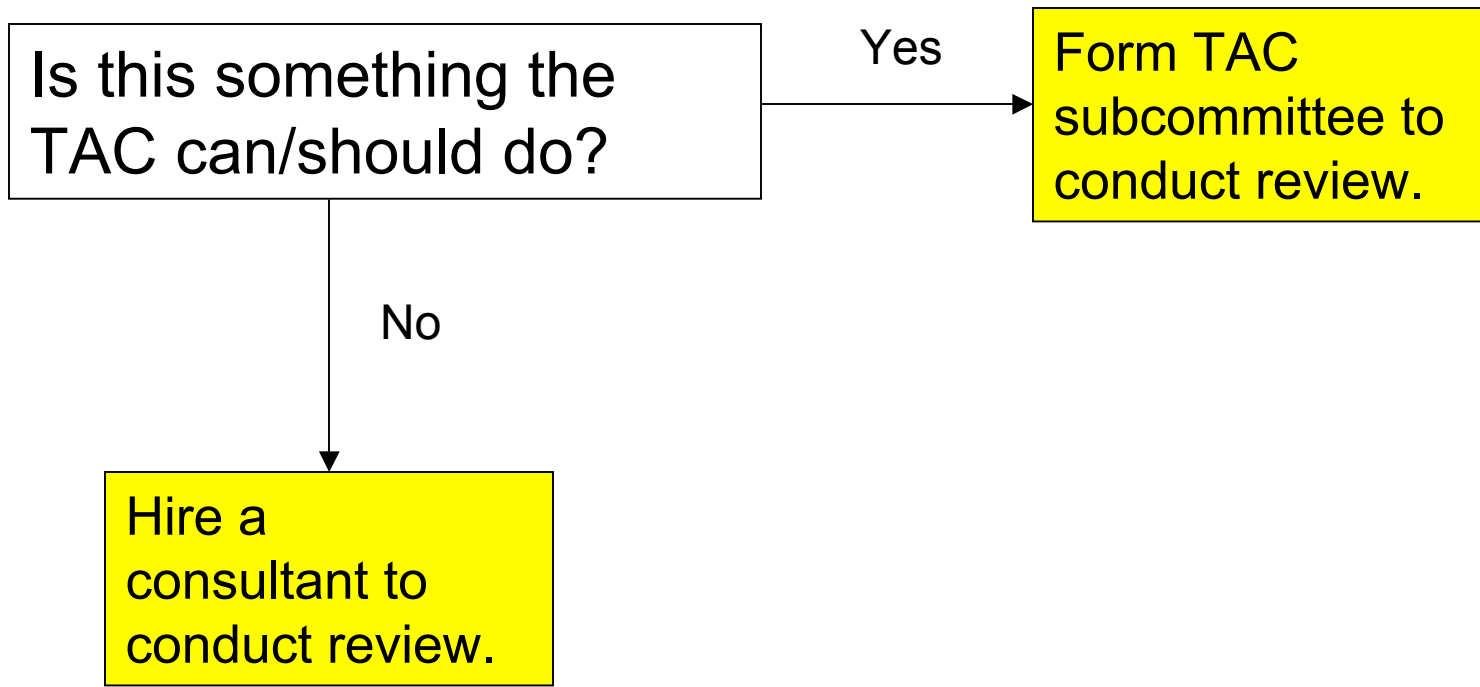
*We need to know more about effectiveness of open-land practices.*



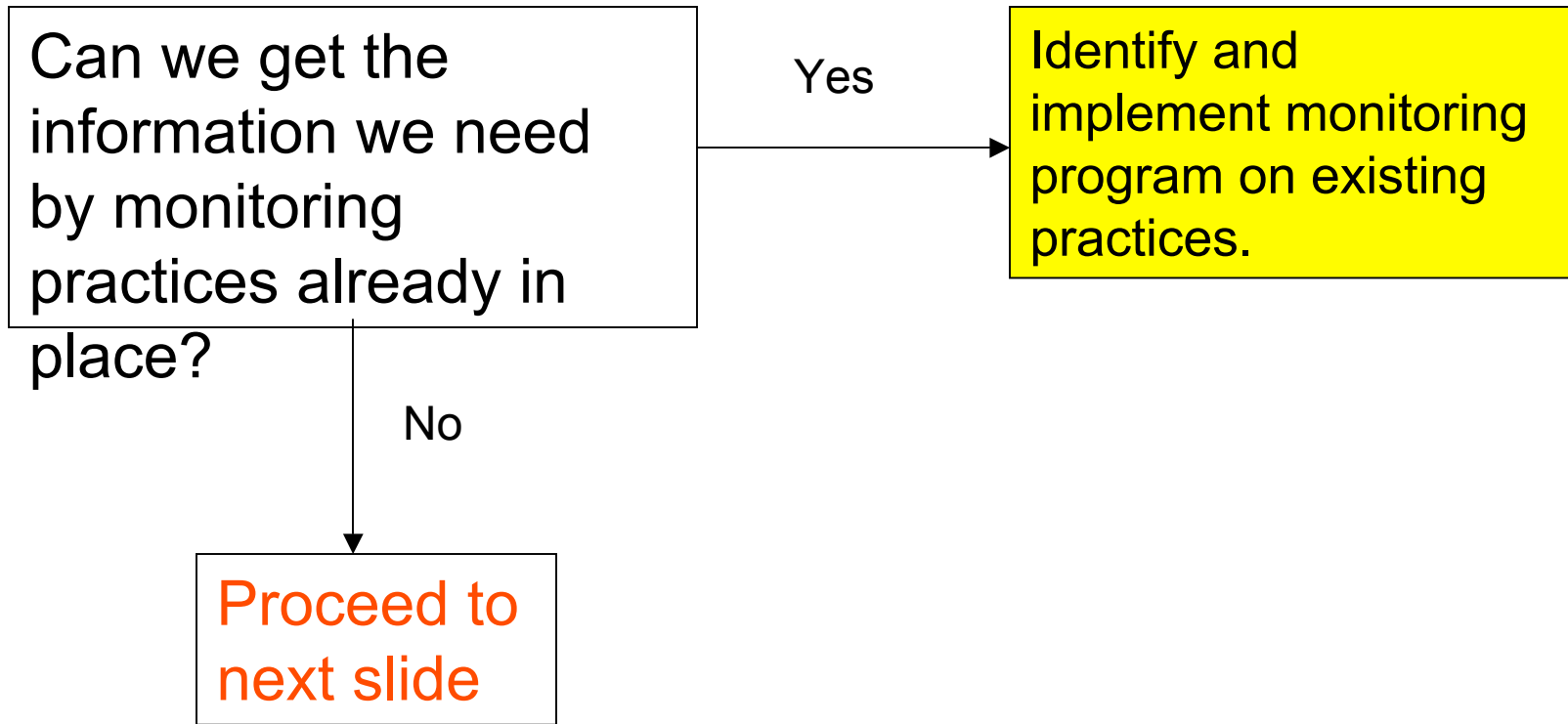
*We need to know more about effectiveness of open-land practices.*



*We need to know more about effectiveness of open-land practices.*



*We need to know more about effectiveness of open-land practices.*



*We need to know more about effectiveness of open-land practices.*

Can we get the information we need by monitoring practices that will be installed soon (e.g., City bus center)?

Yes

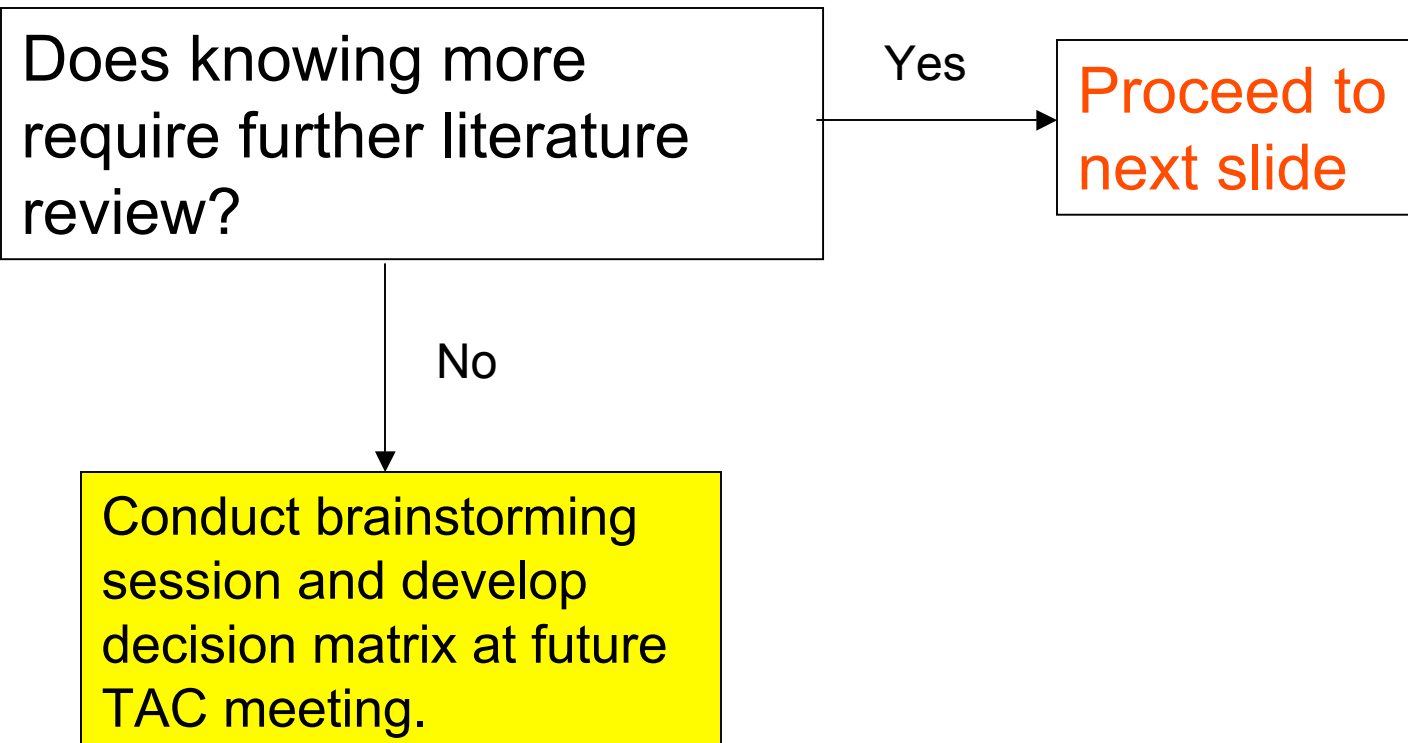
Identify and implement monitoring program on practices scheduled to be installed soon.

No

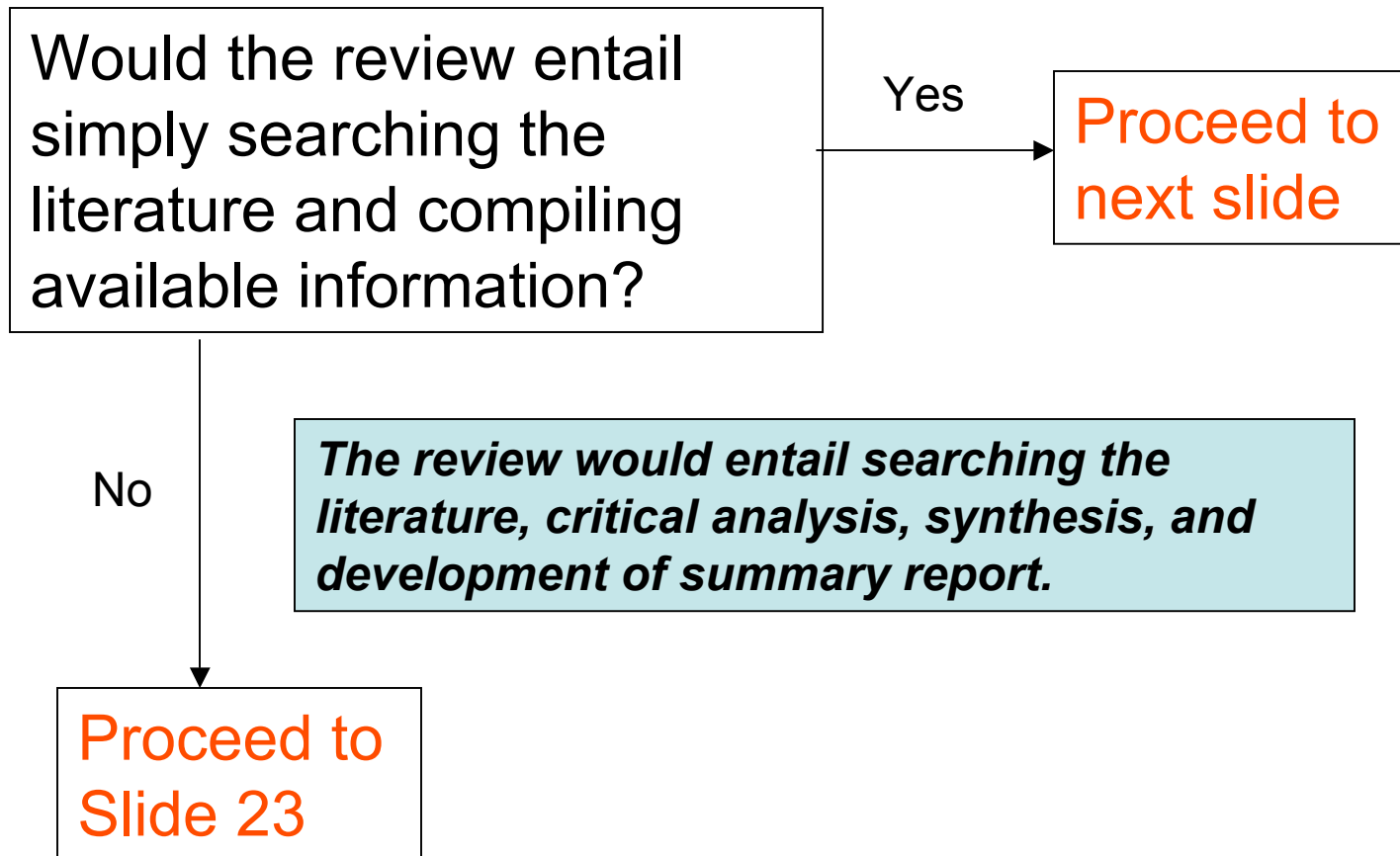
*We need to work with a developer to install and monitor practices on a new development.*

Identify and begin discussions with developer to implement practices and monitoring program (e.g., Biscuit Run).

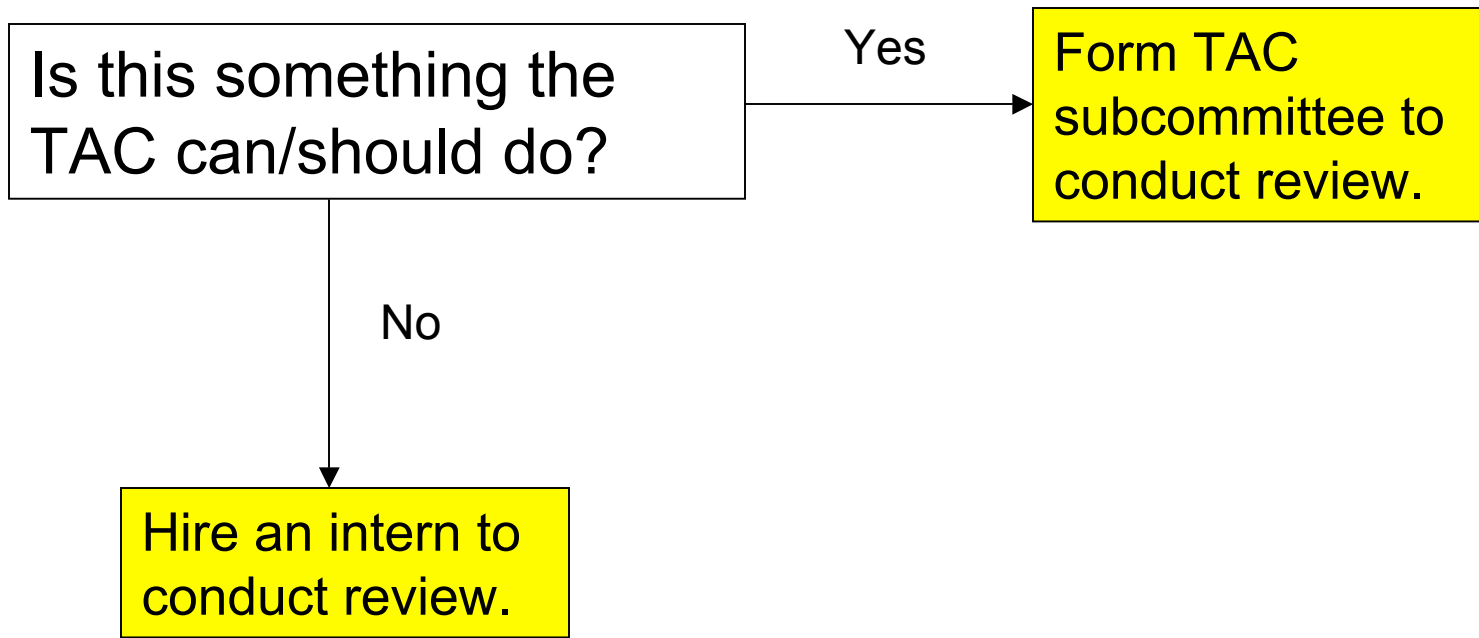
*We need to know more about cost, acceptance, etc.*



*We need to know more about cost, acceptance, etc.*



*We need to know more about cost, acceptance, etc.*



*We need to know more about cost, acceptance, etc.*

